

Increasing Access to a Four-Year College: Impacts of a California State University Guaranteed Admission Program on College Enrollment Rates

*Joleen Chiu**

Department of Economics, University of California, Los Angeles, Los Angeles, CA

<https://doi.org/10.33697/ajur.2023.094>

*Student: joleenchiu@ucla.edu**

Mentor: j.londonovelez@econ.ucla.edu

APPENDIXES

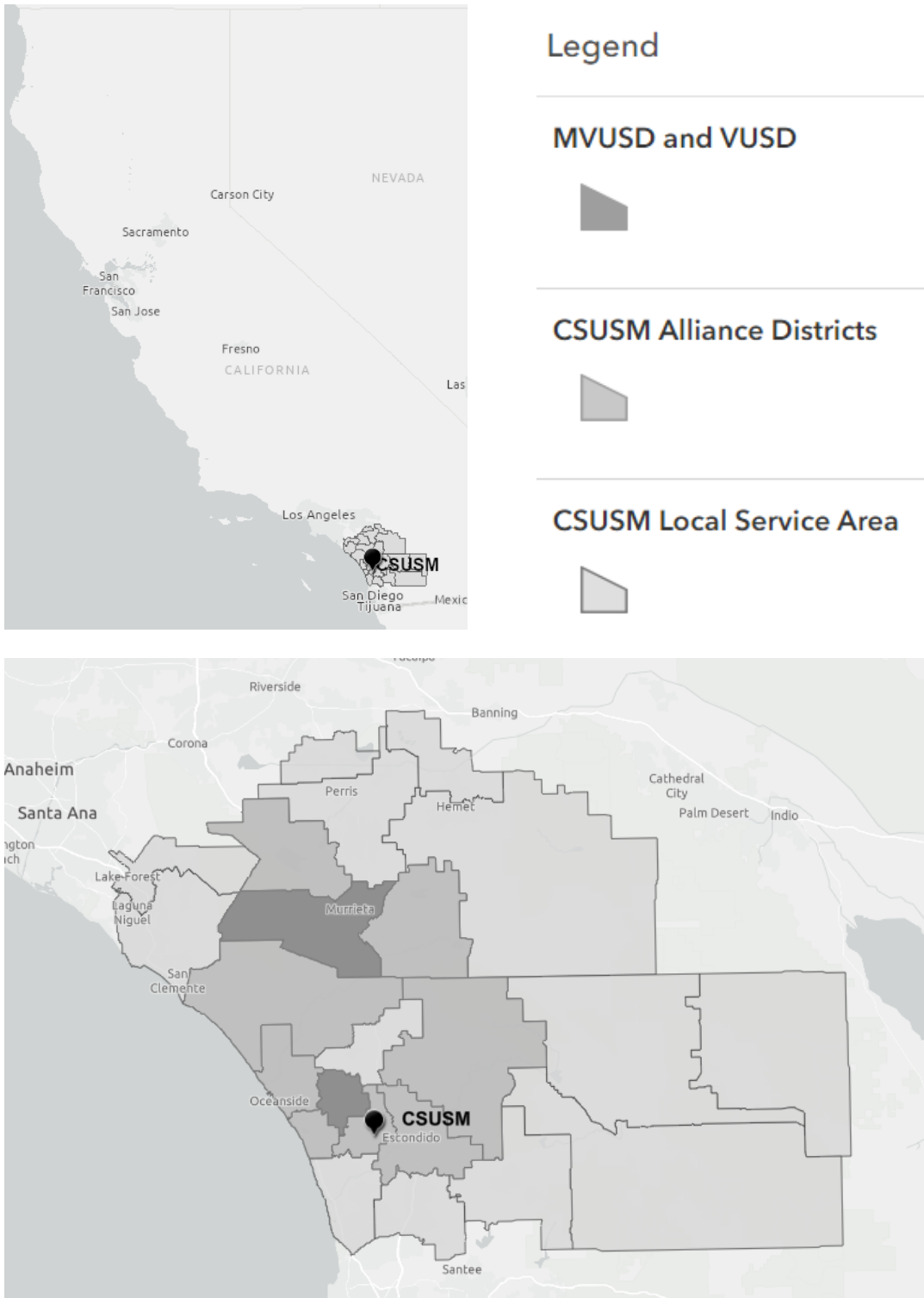


Figure A1. Map of CSUSM and the Alliance. This figure presents the location of CSUSM, the 23 local school districts it serves, the 10 school districts it has signed a MOU with (the "Alliance"), and the two school districts studied in this paper (MVUSD and VUSD). The maps were created in ArcGIS using data provided by the California Department of Education (CDE) and imaging data provided by SanGIS, California State Parks, Esri, HERE, Garmin, SafeGraph, FAO, METI/NASA, USGS, Bureau of Land Management, EPA, and NPS.

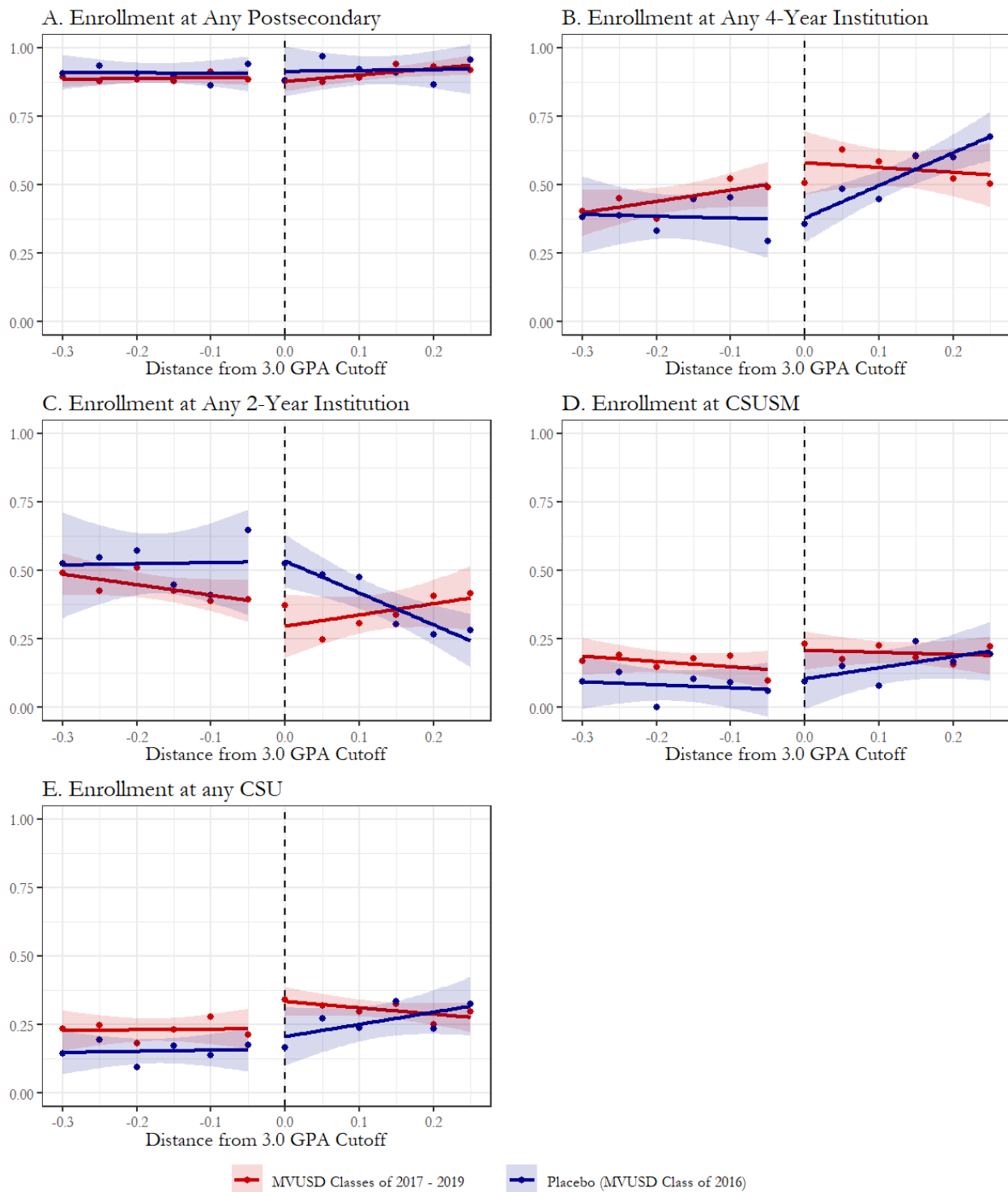


Figure A2. Enrollment Rates of Placebo Sample (MVUSD Graduating Class of 2016). This figure presents binned scatterplots and linear best-fit lines of the enrollment outcomes of the MVUSD graduating class of 2016 (placebo sample) compared with the MVUSD graduating classes of 2017 to 2019 by their GPA distance to the 3.0 GPA cutoff using a bin size of 0.05. The sample is restricted to graduates who have taken the SAT I or ACT exams have a GPA within 0.3 of the GPA cutoff.

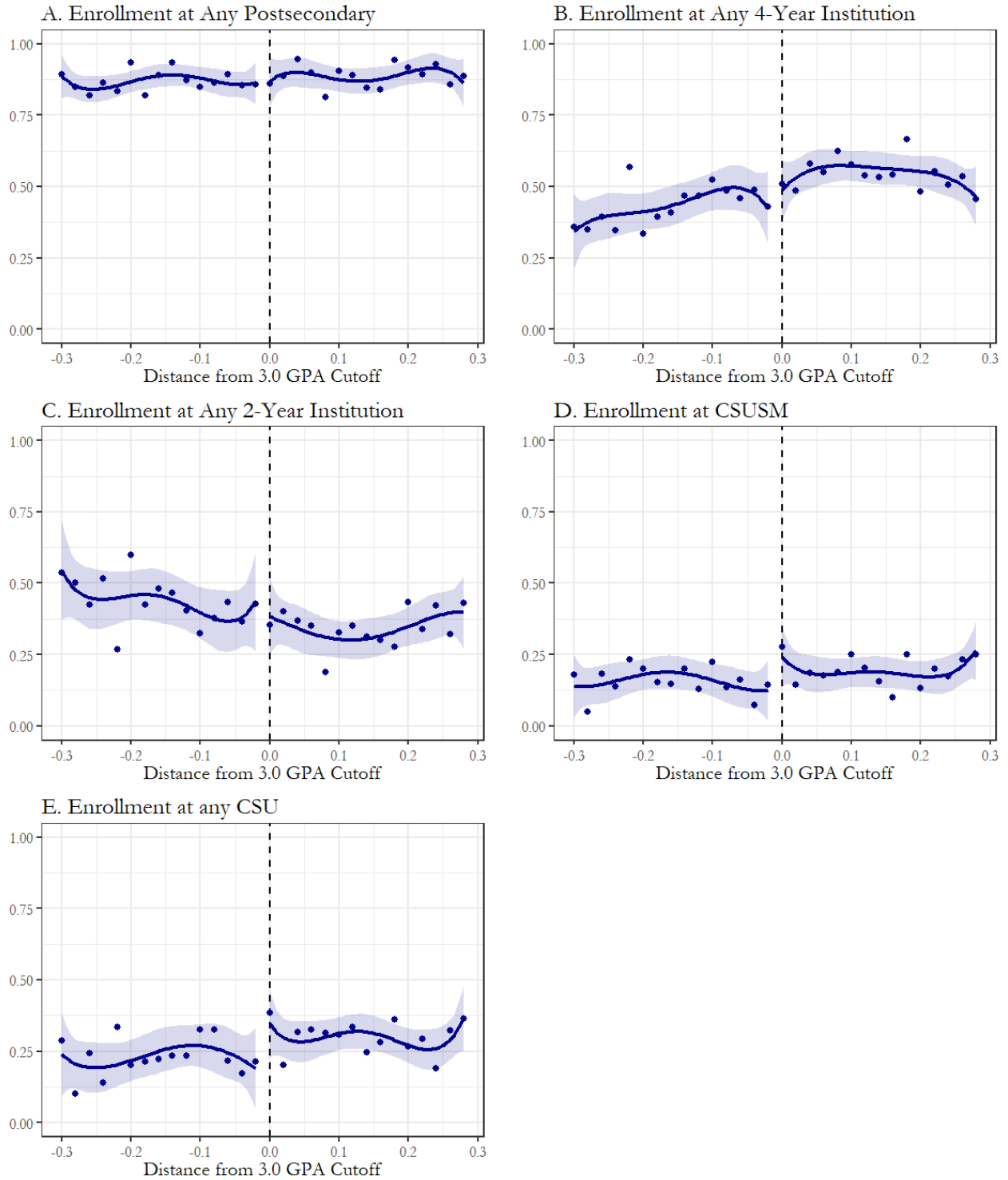


Figure A3. Enrollment Rates of the Full Sample (4^{th} order). This figure presents binned scatterplots and fourth-order best-fit lines of the enrollment outcomes of MVUSD and VUSD graduates by their GPA distance to the 3.0 GPA cutoff using a bin size of 0.02. The sample is restricted to graduates from 2017 to 2019 for MVUSD and 2018 to 2019 for VUSD who have satisfied the A-G course requirement (VUSD only), took the SAT I or ACT exams, and have a GPA within 0.3 of the GPA cutoff.

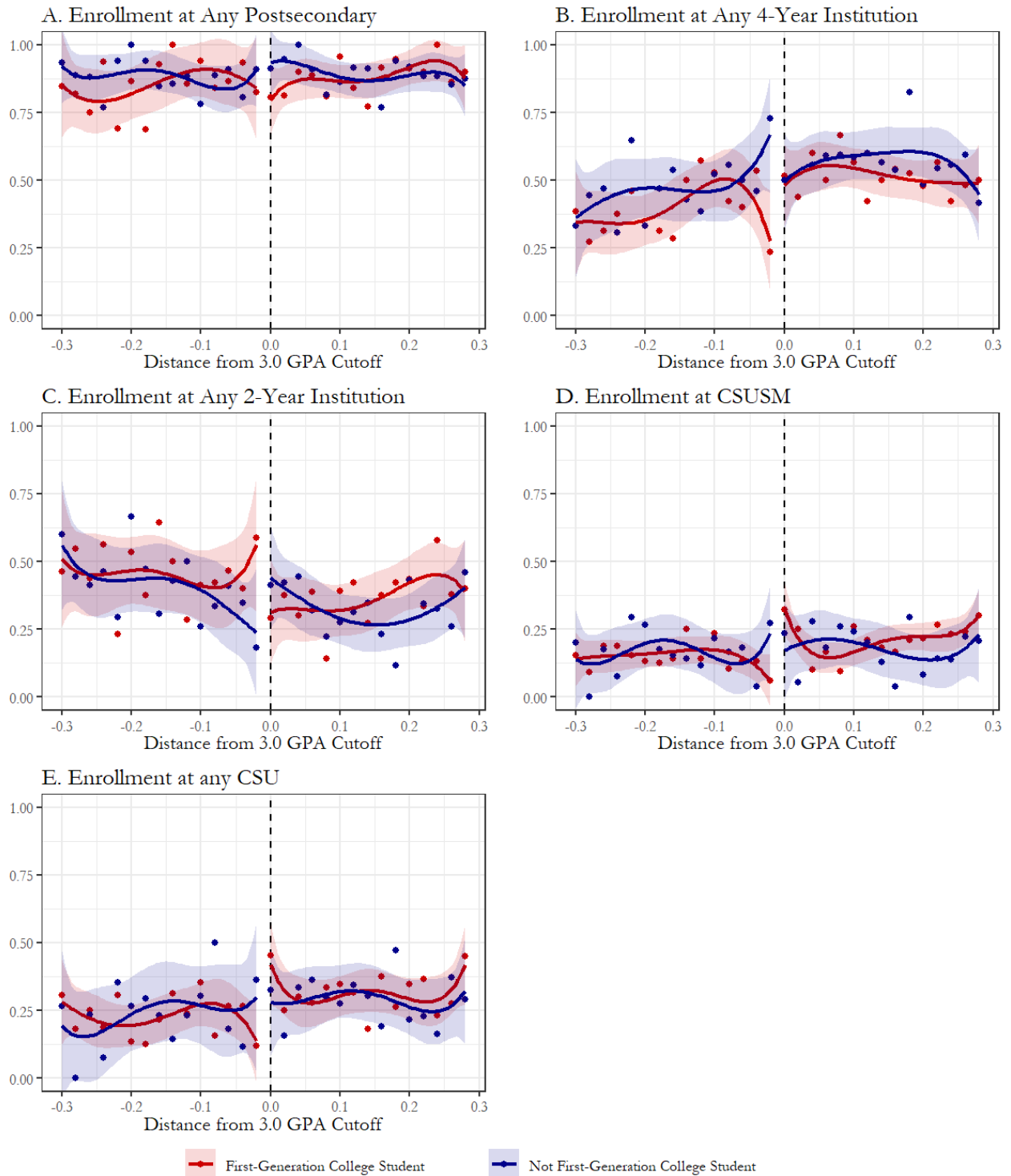


Figure A4. Enrollment Rates by Parents' Educational Attainment (4^{th} order). This figure compares binned scatterplots and fourth-order best-fit lines of the enrollment outcomes of first-generation MVUSD and VUSD graduates with non-first-generation graduates by their GPA distance to the 3.0 GPA cutoff using a bin size of 0.02. The sample is restricted to graduates from 2017 to 2019 for MVUSD and 2018 to 2019 for VUSD who have satisfied the A-G course requirement (VUSD only), took the SAT I or ACT exams, and have a GPA within 0.3 of the GPA cutoff.

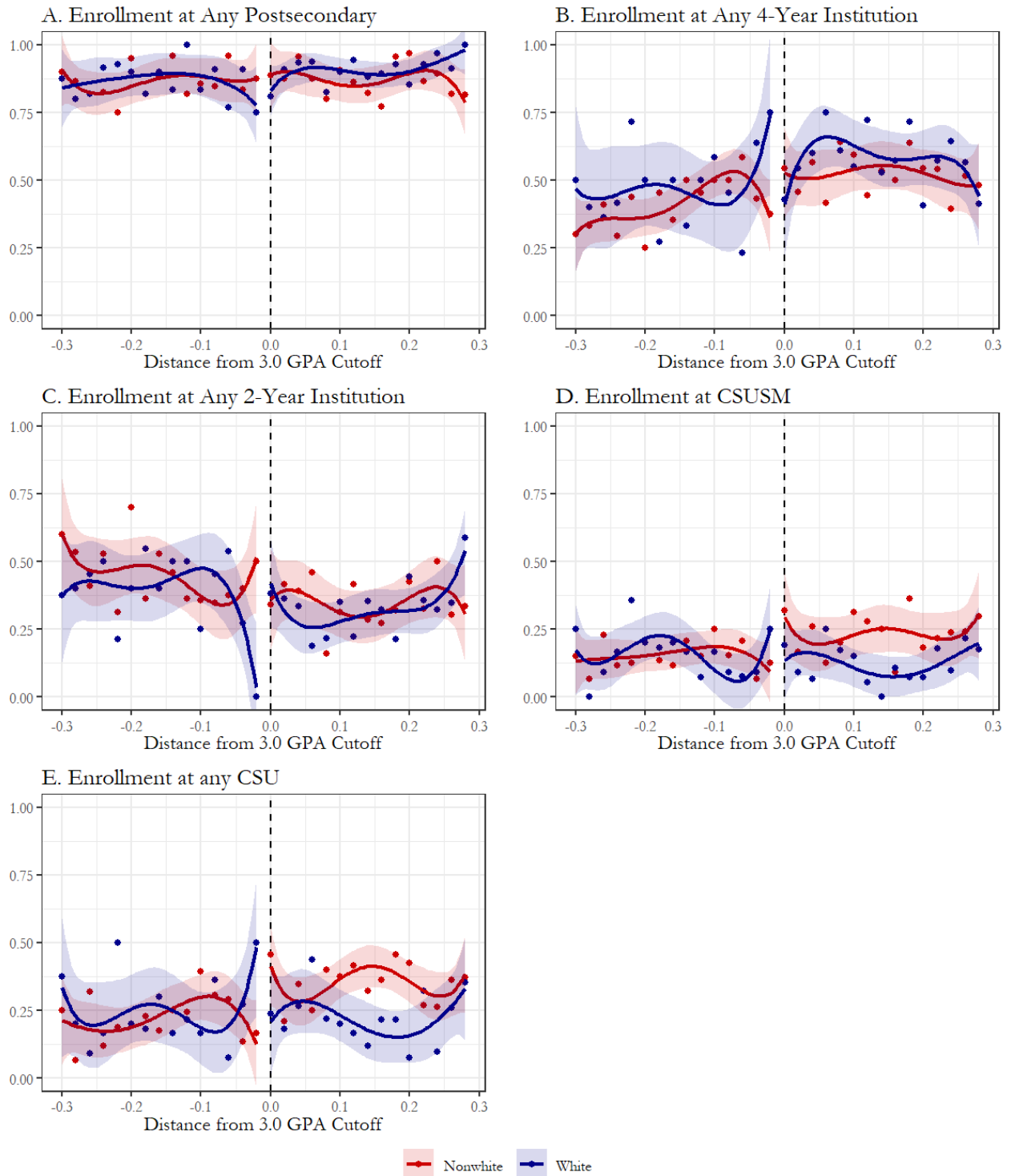


Figure A5. Enrollment Rates by Race (4^{th} order). This figure compares binned scatterplots and fourth-order best-fit lines of the enrollment outcomes of nonwhite MVUSD and VUSD graduates with white graduates by their GPA distance to the 3.0 GPA cutoff using a bin size of 0.02. The sample is restricted to graduates from 2017 to 2019 for MVUSD and 2018 to 2019 for VUSD who have satisfied the A-G course requirement (VUSD only), took the SAT I or ACT exams, and have a GPA within 0.3 of the GPA cutoff.

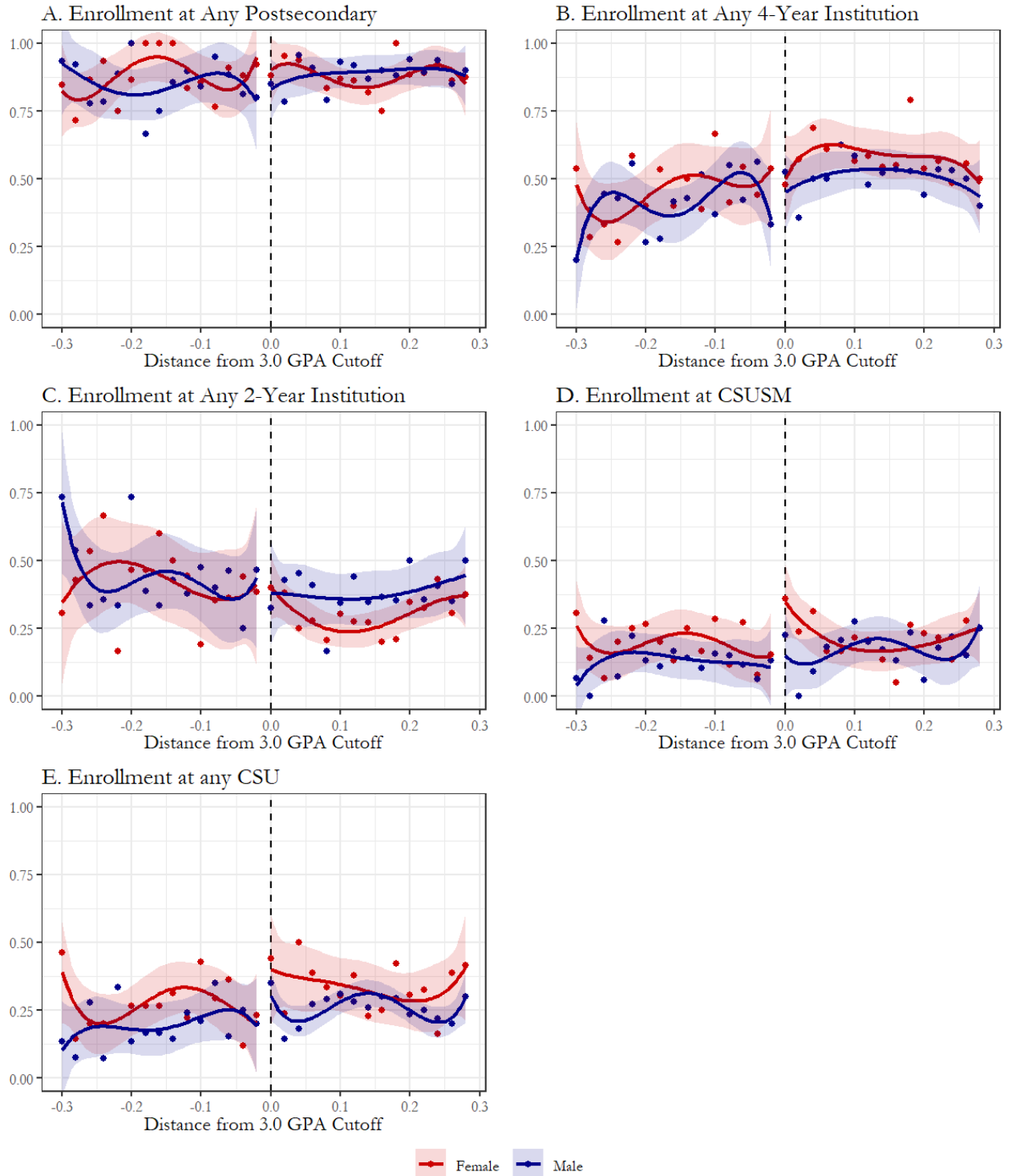


Figure A6. Enrollment Rates by Gender (4^{th} order). This figure compares binned scatterplots and fourth-order best-fit lines of the enrollment outcomes of female MVUSD and VUSD graduates with male graduates by their GPA distance to the 3.0 GPA cutoff using a bin size of 0.02. The sample is restricted to graduates from 2017 to 2019 for MVUSD and 2018 to 2019 for VUSD who have satisfied the A-G course requirement (VUSD only), took the SAT I or ACT exams, and have a GPA within 0.3 of the GPA cutoff.

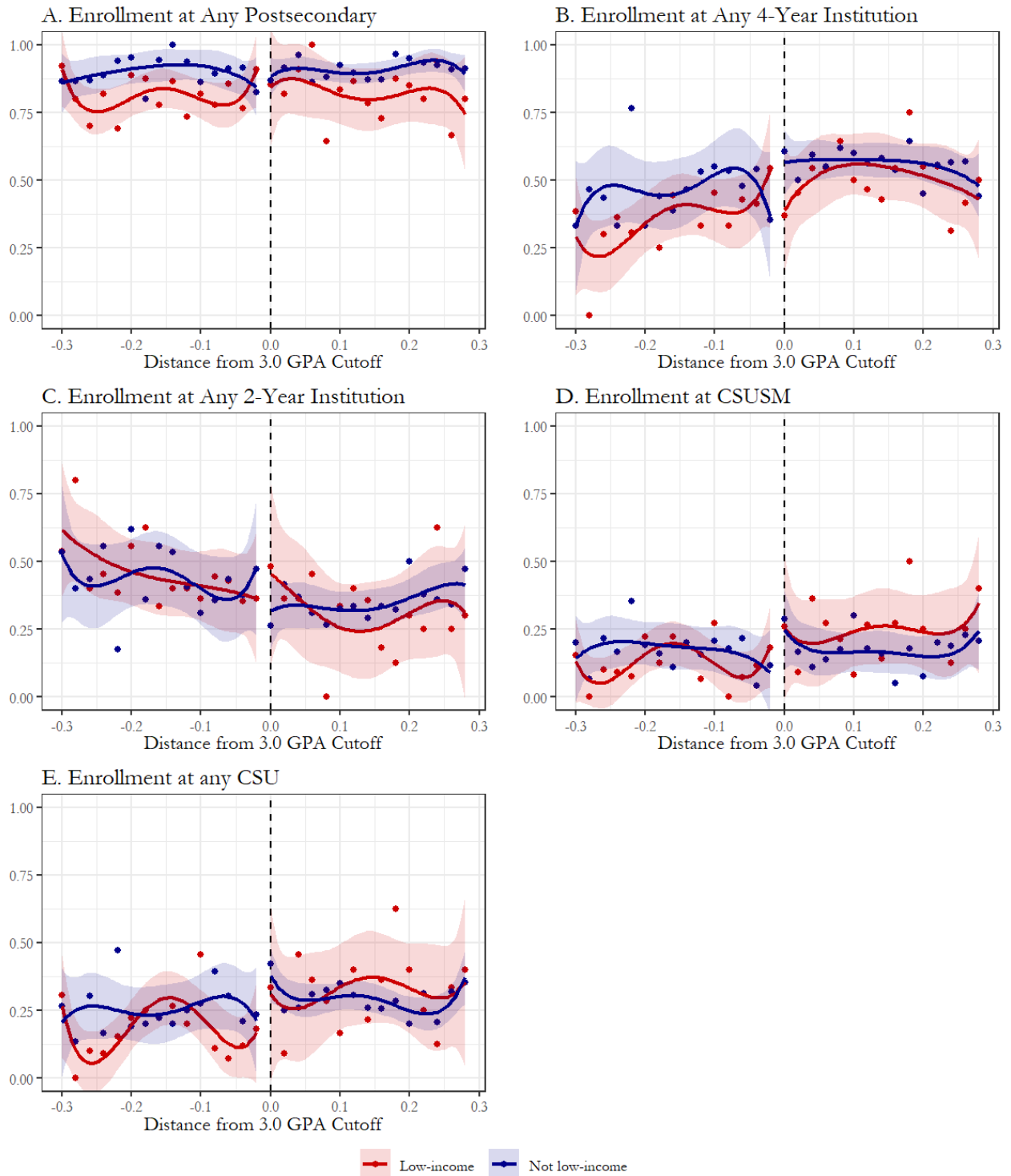


Figure A7. Enrollment Rates by Income (4^{th} order). This figure compares binned scatterplots and fourth-order best-fit lines of the enrollment outcomes of low-income MVUSD and VUSD graduates with non-low-income graduates by their GPA distance to the 3.0 GPA cutoff using a bin size of 0.02. The sample is restricted to graduates from 2017 to 2019 for MVUSD and 2018 to 2019 for VUSD who have satisfied the A-G course requirement (VUSD only), took the SAT I or ACT exams, and have a GPA within 0.3 of the GPA cutoff.

	By First-Gen Status			By Race			By Gender		By Low-Income Status	
	Full Sample (N = 436) (1)	First-Generation (N = 212) (2)	Not First-Generation (N = 224) (3)	Nonwhite (N = 237) (4)	White (N = 199) (5)	Female (N = 225) (6)	Male (N = 211) (7)	Low-Income (N = 119) (8)	Not Low-Income (N = 317) (9)	
Any Postsecondary										
RD Estimate	-0.00621 (0.04872)	-0.02853 (0.072839)	0.009233 (0.065614)	-0.00175 (0.069314)	-0.00883 (0.068461)	0.083512 (0.06685)	-0.07247 (0.070626)	0.097184 (0.079128)	-0.04392 (0.060218)	
Control Mean	0.9181575	0.9097677	0.9300755	0.9096579	0.9286471	0.871862	0.949745	0.9214585	0.91737165	
P Identical	0.69966				0.942892	0.110877		0.18834		
Any Four-year										
RD Estimate	-0.09645 (0.088345)	-0.11143 (0.12865)	-0.07473 (0.12257)	0.083451 (0.118587)	-0.33125** (0.13276)	-0.11611 (0.130619)	-0.07571 (0.120792)	0.006817 (0.167028)	-0.13587 (0.104623)	
Control Mean	0.4776847	0.5018137	0.4494524	0.416715	0.565384	0.4461143	0.5027391	0.46677955	0.48295675	
P Identical	0.83638				0.020478	0.820527		0.464843		
Any Two-year										
RD Estimate	0.090234 (0.086726)	0.082899 (0.126679)	0.083964 (0.119524)	-0.0852 (0.115338)	0.32242** (0.131478)	0.199625 (0.130073)	0.003243 (0.116028)	0.090366 (0.162432)	0.091952 (0.103209)	
Control Mean	0.440463	0.40795	0.4805965	0.492938	0.36327	0.4257615	0.447001	0.4547035	0.434412	
P Identical	0.995121				0.020185	0.26017		0.993401		
CSUSM Only										
RD Estimate	-0.00228 (0.063361)	0.007875 (0.097985)	-0.02469 (0.081241)	0.024809 (0.087711)	-0.04001 (0.092574)	-0.10931 (0.096799)	0.090178 (0.083284)	-0.04433 (0.124506)	0.020685 (0.073671)	
Control Mean	0.10838635	0.1212414	0.10004445	0.10985245	0.10792335	0.15350085	0.0709844	0.17172805	0.08124945	
P Identical	0.797345				0.61429	0.11834		0.641745		
Any CSU										
RD Estimate	0.018613 (0.0773)	0.100359 (0.114703)	-0.05423 (0.104647)	0.074772 (0.107267)	-0.05884 (0.111664)	0.027344 (0.117189)	0.016756 (0.103082)	0.096756 (0.150551)	-0.0043 (0.089942)	
Control Mean	0.18483975	0.1869457	0.1783559	0.1907697	0.1795532	0.17852575	0.1865818	0.2292575	0.16631895	
P Identical	0.319121				0.393099	0.945886		0.552481		

Table A1. Placebo Estimates Using Main Result Bandwidths (BW: [2.73 to 3.43]). This table presents RD estimates of the effect of eligibility for the CSUSM MOUs on college enrollment rates by postsecondary institution type and demographic following Equation ?? for the placebo sample (MVUSD graduating class of 2016). Control mean reports estimated baseline enrollment rates for the bin (size = 0.05) below the 3.0 GPA cutoff, calculated as $\beta_0 + \beta_2 \cdot 2.95$ derived from Equation ?. P Identical represents p-values for the hypothesis that the coefficients between each pair of demographic groups are identical. For instance, the P Identical value in column two represents the hypothesis that first-generation and non-first-generation students have the same RD estimate. The bandwidth is fixed at 2.73 to 3.43 to match bandwidths from the main results reported in Table ?. *: p-value < .1; **: p-value < .05; ***: p-value < .01.

	By First-Gen Status			By Race		By Gender		By Low-Income Status	
	Full Sample (<i>N</i> = 1325) (1)	First-Generation (<i>N</i> = 583) (2)	Not First-Generation (<i>N</i> = 742) (3)	Nonwhite (<i>N</i> = 795) (4)	White (<i>N</i> = 530) (5)	Female (<i>N</i> = 667) (6)	Male (<i>N</i> = 658) (7)	Low-Income (<i>N</i> = 329) (8)	Not Low-Income (<i>N</i> = 996) (9)
Any Postsecondary									
RD Estimate	-0.01366 (0.031382)	-0.06239 (0.049579)	0.024526 (0.04022)	-0.02885 (0.040599)	0.00886 (0.049811)	-0.02007 (0.042383)	-0.00505 (0.046347)	-0.0109 (0.073648)	-0.01453 (0.033336)
Control Mean	0.89555715	0.89550425	0.896533	0.8938178	0.8987171	0.9206224	0.8737111	0.83139005	0.91917055
P Identical	0.168579	0.168579	0.168579	0.168579	0.168579	0.168579	0.168579	0.168579	0.168579
Any Four-year									
RD Estimate	0.066493 (0.052802)	0.111347 (0.079196)	0.030193 (0.070776)	0.026444 (0.065801)	0.130038 (0.088956)	0.110366 (0.076203)	0.04863 (0.073408)	0.110854 (0.101054)	0.049431 (0.061924)
Control Mean	0.47189245	0.4237705	0.51267155	0.47494515	0.466508	0.47123675	0.46538615	0.40214565	0.4980763
P Identical	0.444544	0.444544	0.444544	0.444544	0.444544	0.444544	0.444544	0.444544	0.444544
Any Two-year									
RD Estimate	-0.08015 (0.051097)	-0.17374** (0.077219)	-0.00567 (0.068088)	-0.05529 (0.063436)	-0.12118 (0.086545)	-0.13044* (0.073258)	-0.05368 (0.071573)	-0.12176 (0.096882)	-0.06396 (0.060193)
Control Mean	0.42366175	0.4717298	0.3838575	0.4188785	0.43221885	0.4493945	0.40832495	0.42924735	0.42111
P Identical	0.101968	0.101968	0.101968	0.101968	0.101968	0.101968	0.101968	0.101968	0.101968
CSUSM Only									
RD Estimate	0.073085* (0.040845)	0.065871 (0.063458)	0.07672 (0.0532)	0.117341** (0.05467)	0.007879 (0.058938)	0.079602 (0.061832)	0.073168 (0.054159)	0.172331** (0.08036)	0.033812 (0.047386)
Control Mean	0.1549205	0.1635925	0.1487565	0.1620915	0.1431275	0.17809	0.1338525	0.106109	0.174532
P Identical	0.894937	0.894937	0.894937	0.894937	0.894937	0.894937	0.894937	0.894937	0.894937
Any CSU									
RD Estimate	0.097135** (0.047723)	0.153137** (0.071581)	0.050784 (0.064146)	0.168301*** (0.06172)	-0.01599 (0.073709)	0.12469* (0.072483)	0.094339 (0.062535)	0.258687*** (0.088111)	0.034571 (0.056497)
Control Mean	0.227851	0.207679	0.2453185	0.2266745	0.233726	0.251281	0.200931	0.121912	0.268766
P Identical	0.286826	0.286826	0.286826	0.286826	0.286826	0.286826	0.286826	0.286826	0.286826

Table A2. MVUSD Class of 2017 to 2019 Estimates Using Main Result Bandwidths (BW: [2.73 to 3.43]). This table presents RD estimates of the effect of eligibility for the CSUSM MOUs on college enrollment rates by postsecondary institution type and demographic following Equation ?? for the sample of MVUSD graduating classes eligible for the CSUSM MOUs (classes of 2017 to 2019) who have satisfied the SAT/ACT completion requirement. Control mean reports estimated baseline enrollment rates for the bin (size = 0.05) below the 3.0 GPA cutoff, calculated as $\beta_0 + \beta_2 \cdot 2.95$ derived from Equation ??; P Identical represents p-values for the hypothesis that the coefficients between each pair of demographic groups are identical. For instance, the P Identical value in column two represents the hypothesis that first-generation and non-first-generation students have the same RD estimate. The bandwidth is fixed at 2.73 to 3.43 to match bandwidths from the main results reported in Table ??; *: p-value < .1; **: p-value < .05; ***: p-value < .01.

	By First-Gen Status			By Race			By Gender		By Low-Income Status	
	Full Sample (<i>N</i> = 407) (1)	First-Generation (<i>N</i> = 199) (2)	Not First-Generation (<i>N</i> = 208) (3)	Nonwhite (<i>N</i> = 226) (4)	White (<i>N</i> = 181) (5)	Female (<i>N</i> = 206) (6)	Male (<i>N</i> = 201) (7)	Low-Income (<i>N</i> = 111) (8)	Not Low-Income (<i>N</i> = 296) (9)	
Any Postsecondary										
RD Estimate	-0.01372 (0.051004)	-0.01467 (0.079667)	-0.0144 (0.065931)	0.015788 (0.073396)	-0.04591 (0.069118)	0.102908 (0.073209)	-0.10288 (0.071027)	0.083432 (0.079943)	-0.04857 (0.063685)	
Control Mean	0.9177473	0.90354955	0.9343244	0.901983	0.93731585	0.8583375	0.95980225	0.924787	0.9159259	
P Identical	0.997885	0.997885	0.997885	0.997885	0.997885	0.997885	0.997885	0.997885	0.997885	
Any Four-year										
RD Estimate	-0.09374 (0.092521)	-0.0978 (0.137126)	-0.07781 (0.126829)	0.095968 (0.122969)	-0.34899** (0.140175)	-0.09079 (0.138387)	-0.09511 (0.124983)	-0.01036 (0.173879)	-0.12834 (0.109998)	
Control Mean	0.46804765	0.4899012	0.4384702	0.39874535	0.57071885	0.4241237	0.5028709	0.44336135	0.4793452	
P Identical	0.914754	0.914754	0.914754	0.914754	0.914754	0.914754	0.914754	0.914754	0.914754	
Any Two-year										
RD Estimate	0.08002 (0.091389)	0.083131 (0.135149)	0.063415 (0.125265)	-0.08018 (0.119795)	0.30308** (0.140703)	0.193702 (0.138144)	-0.00778 (0.121484)	0.093793 (0.170568)	0.079776 (0.108888)	
Control Mean	0.4497035	0.4136415	0.495864	0.50322	0.366592	0.4342285	0.4569185	0.481401	0.4365885	
P Identical	0.914778	0.914778	0.914778	0.914778	0.914778	0.914778	0.914778	0.914778	0.914778	
CSUSM Only										
RD Estimate	0.008016 (0.064834)	0.058753 (0.101284)	-0.04527 (0.083255)	0.019158 (0.0893)	-0.01319 (0.094753)	-0.10594 (0.099074)	0.103967 (0.085397)	-0.00823 (0.125017)	0.021226 (0.07611)	
Control Mean	0.1006793	0.1043007	0.0965572	0.1027535	0.10090145	0.14108625	0.066931	0.14517185	0.0818056	
P Identical	0.425505	0.425505	0.425505	0.425505	0.425505	0.425505	0.425505	0.425505	0.425505	
Any CSU										
RD Estimate	0.015336 (0.080159)	0.140612 (0.120647)	-0.08368 (0.107029)	0.063027 (0.110336)	-0.05292 (0.116376)	0.039919 (0.121856)	-0.001 (0.106912)	0.118505 (0.155954)	-0.01661 (0.093455)	
Control Mean	0.18353555	0.17508	0.1781894	0.18724465	0.18158325	0.166043	0.1945086	0.2123595	0.17240555	
P Identical	0.164035	0.164035	0.164035	0.164035	0.164035	0.164035	0.164035	0.164035	0.164035	

Table A3. Placebo Estimates Using Data-Driven Bandwidths (BW: [2.74 to 3.4]). This table presents RD estimates of the effect of eligibility for the CSUSM MOUs on college enrollment rates by postsecondary institution type and demographic following Equation ?? for the placebo sample (MVUSD graduating class of 2016). Control mean reports estimated baseline enrollment rates for the bin (size = 0.05) below the 3.0 GPA cutoff, calculated as $\beta_0 + \beta_2 \cdot 2.95$ derived from Equation ???. P Identical represents p-values for the hypothesis that the coefficients between each pair of demographic groups are identical. For instance, the P Identical value in column two represents the hypothesis that first-generation and non-first-generation students have the same RD estimate. The bandwidth is calculated following Calonico *et al.* (2014) and fixed from running the regression for the placebo sample and the outcome of enrollment at any postsecondary.?: *, p-value < .1; **; p-value < .05; ***, p-value < .01.

	By First-Gen Status			By Race		By Gender		By Low-Income Status	
	Full Sample (<i>N</i> = 1339) (1)	First-Generation (<i>N</i> = 592) (2)	Not First-Generation (<i>N</i> = 747) (3)	Nonwhite (<i>N</i> = 806) (4)	White (<i>N</i> = 533) (5)	Female (<i>N</i> = 670) (6)	Male (<i>N</i> = 669) (7)	Low-Income (<i>N</i> = 333) (8)	Not Low-Income (<i>N</i> = 1006) (9)
Any Postsecondary									
RD Estimate	-0.01366 (0.031447)	-0.06186 (0.049581)	0.024426 (0.040374)	-0.02924 (0.040758)	0.008672 (0.049691)	-0.02026 (0.042642)	-0.00439 (0.046284)	-0.01115 (0.073837)	-0.01447 (0.033378)
Control Mean	0.8950798	0.89703365	0.8946521	0.8922972	0.9007715	0.91729595	0.8758803	0.82989625	0.91909355
P Identical		0.172591			0.564802	0.801712		0.962152	
Any Four-year									
RD Estimate	0.066158 (0.052789)	0.110667 (0.079135)	0.030048 (0.070777)	0.025981 (0.065763)	0.130316 (0.088955)	0.110168 (0.076198)	0.047828 (0.073369)	0.108533 (0.100773)	0.049551 (0.061927)
Control Mean	0.4693089	0.42042855	0.5112091	0.4732002	0.463468	0.469644	0.46164245	0.3913985	0.49869475
P Identical		0.447388			0.345057	0.555935		0.618054	
Any Two-year									
RD Estimate	-0.07981 (0.051122)	-0.17253** (0.077271)	-0.00562 (0.068101)	-0.05522 (0.063457)	-0.12164 (0.086608)	-0.13043* (0.073268)	-0.05222 (0.071641)	-0.11968 (0.097033)	-0.06402 (0.060201)
Control Mean	0.425765	0.4766021	0.383443	0.419097	0.4373144	0.44765	0.41423685	0.43849775	0.420387
P Identical		0.104505			0.53475	0.4459		0.627602	
CSUSM Only									
RD Estimate	0.072579* (0.040744)	0.065131 (0.063273)	0.076508 (0.053069)	0.116287** (0.054487)	0.008166 (0.058814)	0.07962 (0.061898)	0.071612 (0.053782)	0.171461** (0.079923)	0.033414 (0.047312)
Control Mean	0.151704	0.1612065	0.145006	0.1587525	0.1399855	0.17966	0.1278055	0.1020765	0.17172
P Identical		0.889584			0.201469	0.922046		0.130426	
Any CSU									
RD Estimate	0.096728** (0.047635)	0.152899** (0.071486)	0.050511 (0.063996)	0.166715*** (0.06149)	-0.01615 (0.073782)	0.124657* (0.072488)	0.093036 (0.062298)	0.257649*** (0.087645)	0.034333 (0.056441)
Control Mean	0.22496	0.20683	0.2404585	0.221602	0.2354565	0.252128	0.1954125	0.1171065	0.2666485
P Identical		0.28574			0.064344	0.740168		0.03635	

Table A4. MVUSD Class of 2017 to 2019 Estimates Using Data-Driven Bandwidths (BW: [2.72 to 3.43]). This table presents RD estimates of the effect of eligibility for the CSUSM MOUs on college enrollment rates by postsecondary institution type and demographic following Equation ?? for the sample of MVUSD graduating classes eligible for the CSUSM MOUs (classes of 2017 to 2019) who have satisfied the SAT/ACT completion requirement. Control mean reports estimated baseline enrollment rates for the bin (size = 0.05) below the 3.0 GPA cutoff, calculated as $\beta_0 + \beta_2 \cdot 2.95$ derived from Equation ??; P Identical represents p-values for the hypothesis that the coefficients between each pair of demographic groups are identical. For instance, the P Identical value in column two represents the hypothesis that first-generation and non-first-generation students have the same RD estimate. The bandwidth is calculated following Calonico *et al.* (2014) and fixed from running the regression for the placebo sample and the outcome of enrollment at any postsecondary.? *: p-value < .1; **: p-value < .05; ***: p-value < .01.

	By First-Gen Status			By Race			By Gender		By Low-Income Status	
	Full Sample (<i>N</i> = 2422) (1)	First-Generation (<i>N</i> = 1099) (2)	Not First-Generation (<i>N</i> = 1323) (3)	Nonwhite (<i>N</i> = 1484) (4)	White (<i>N</i> = 938) (5)	Female (<i>N</i> = 1250) (6)	Male (<i>N</i> = 1172) (7)	Low-Income (<i>N</i> = 739) (8)	Not Low-Income (<i>N</i> = 1683) (9)	
Any Postsecondary										
RD Estimate	-0.0054 (0.026365)	-0.02088 (0.039389)	0.007228 (0.035521)	-0.02196 (0.03329)	0.023477 (0.043516)	-0.03451 (0.036759)	0.024684 (0.037892)	-0.01825 (0.052733)	-0.00629 (0.029839)	
Control Mean	0.86581636	0.86914766	0.86362774	0.87177474	0.85487176	0.87818316	0.85005484	0.82923384	0.88540232	
P Identical	0.595478	0.595478	0.262332	0.411367	0.262332	0.776465	0.831831	0.905957	0.831831	
Any Four-year										
RD Estimate	0.025301 (0.039401)	0.019797 (0.058089)	0.029632 (0.053673)	0.009867 (0.048861)	0.045962 (0.066936)	0.041111 (0.056577)	0.018728 (0.054883)	0.029688 (0.069841)	0.019717 (0.047793)	
Control Mean	0.4379653	0.42796588	0.44702544	0.43770042	0.44410528	0.45578574	0.41606914	0.41342162	0.45068464	
P Identical	0.901054	0.901054	0.6623	0.776465	0.6623	0.776465	0.905957	0.905957	0.905957	
Any Two-year										
RD Estimate	-0.0307 (0.038495)	-0.04068 (0.057292)	-0.0224 (0.052028)	-0.03183 (0.048067)	-0.02248 (0.06471)	-0.07562 (0.05445)	0.005956 (0.054486)	-0.04794 (0.067863)	-0.026 (0.046838)	
Control Mean	0.427861	0.4411748	0.4165874	0.4340664	0.4107744	0.4224024	0.4339748	0.4158172	0.4347336	
P Identical	0.813121	0.813121	0.90787	0.90787	0.90787	0.289716	0.790368	0.790368	0.790368	
CSUSM Only										
RD Estimate	0.044098 (0.030037)	0.061746 (0.046364)	0.026747 (0.03901)	0.093725** (0.039203)	-0.03602 (0.045932)	0.038046 (0.045669)	0.054971 (0.039062)	0.089288 (0.05668)	0.02622 (0.035213)	
Control Mean	0.13428494	0.13955946	0.1325488	0.1317722	0.14025136	0.16144416	0.106928	0.13750604	0.13254804	
P Identical	0.560463	0.560463	0.38659	0.38659	0.38659	0.778225	0.325945	0.325945	0.325945	
Any CSU										
RD Estimate	0.065859* (0.035303)	0.0826 (0.052615)	0.050085 (0.047587)	0.118026*** (0.045101)	-0.01826 (0.056084)	0.072931 (0.053408)	0.06984 (0.045956)	0.122457** (0.06284)	0.040221 (0.042764)	
Control Mean	0.20739694	0.20750372	0.20914748	0.20882724	0.20912576	0.24426242	0.16744052	0.18951644	0.21638542	
P Identical	0.646182	0.646182	0.064183	0.064183	0.064183	0.965007	0.277085	0.277085	0.277085	

Table A5. RD Estimates by Type of College and Demographic (BW: [2.4, 3.6]). This table presents RD estimates of the effect of eligibility for the CSUSM MOUs on college enrollment rates by postsecondary institution type and demographic following Equation ???. The sample is restricted to graduates from 2017 to 2019 for MVUSD and 2018 to 2019 for VUSD who have satisfied the A-G course requirement (VUSD only) and the SAT/ACT completion requirement. Control mean reports estimated baseline enrollment rates for the bin (size = 0.02) below the 3.0 GPA cutoff, calculated as $\beta_0 + \beta_2 \cdot 2.95$ derived from Equation ???. P Identical represents p-values for the hypothesis that the coefficients between each pair of demographic groups are identical. For instance, the P Identical value in column two represents the hypothesis that first-generation and non-first-generation students have the same RD estimate. The bandwidth is fixed at 0.6 above and below the 3.0 GPA cutoff. *: p-value < .1, **: p-value < .05, ***: p-value < .01.

	By First-Gen Status			By Race		By Gender		By Low-Income Status	
	Full Sample (<i>N</i> = 2734) (1)	First-Generation (<i>N</i> = 1205) (2)	Not First-Generation (<i>N</i> = 1529) (3)	Nonwhite (<i>N</i> = 1652) (4)	White (<i>N</i> = 1082) (5)	Female (<i>N</i> = 1419) (6)	Male (<i>N</i> = 1315) (7)	Low-Income (<i>N</i> = 819) (8)	Not Low-Income (<i>N</i> = 1915) (9)
Any Postsecondary									
RD Estimate	0.006746 (0.024663)	0.001679 (0.037612)	0.010732 (0.032738)	-0.00597 (0.031582)	0.026125 (0.039874)	-0.00668 (0.034364)	0.021112 (0.035484)	0.020345 (0.050184)	-0.00471 (0.027669)
Control Mean	0.8580465	0.85554288	0.86048942	0.85972648	0.85568864	0.86559294	0.84863154	0.81213216	0.88104588
P Identical	0.855316	0.855316	0.855316	0.855316	0.855316	0.855316	0.855316	0.855316	0.855316
Any Four-year									
RD Estimate	0.048547 (0.036683)	0.050346 (0.05474)	0.048323 (0.04955)	0.023909 (0.045626)	0.077026 (0.062012)	0.072129 (0.052533)	0.030634 (0.051197)	0.062497 (0.065746)	0.040015 (0.04426)
Control Mean	0.42633708	0.41241076	0.4375751	0.42618416	0.43622904	0.4409097	0.4102375	0.39809986	0.44010838
P Identical	0.978142	0.978142	0.978142	0.978142	0.978142	0.978142	0.978142	0.978142	0.978142
Any Two-year									
RD Estimate	-0.0418 (0.035693)	-0.04867 (0.053769)	-0.03759 (0.047861)	-0.02988 (0.044661)	-0.0509 (0.059828)	-0.07881 (0.050291)	-0.00952 (0.050696)	-0.04215 (0.063301)	-0.04472 (0.043324)
Control Mean	0.4317114	0.4431232	0.4228984	0.4335264	0.4194646	0.4246932	0.438395	0.4140184	0.4409484
P Identical	0.877487	0.877487	0.877487	0.877487	0.877487	0.877487	0.877487	0.877487	0.877487
CSUM Only									
RD Estimate	0.070521** (0.027367)	0.088119** (0.043006)	0.047281 (0.035108)	0.10979*** (0.03621)	0.010459 (0.04097)	0.067454 (0.04166)	0.076373** (0.035381)	0.114345** (0.052656)	0.052627* (0.03179)
Control Mean	0.1152406	0.12063182	0.1167662	0.1177	0.1126878	0.1434584	0.0882868	0.1210932	0.1126594
P Identical	0.456946	0.456946	0.456946	0.456946	0.456946	0.456946	0.456946	0.456946	0.456946
Any CSU									
RD Estimate	0.092349*** (0.032634)	0.097799** (0.049399)	0.081039* (0.043479)	0.138812*** (0.042032)	0.018397 (0.05134)	0.098136*** (0.049323)	0.093648** (0.042356)	0.148062** (0.05888)	0.068427* (0.0393)
Control Mean	0.18829562	0.19645292	0.186197	0.19106884	0.1886535	0.22637724	0.1487016	0.1767578	0.19391944
P Identical	0.798352	0.798352	0.798352	0.798352	0.798352	0.798352	0.798352	0.798352	0.798352

Table A6. RD Estimates by Type of College and Demographic (BW: [2.3, 3.7]). This table presents RD estimates of the effect of eligibility for the CSUM MOUs on college enrollment rates by postsecondary institution type and demographic following Equation ???. The sample is restricted to graduates from 2017 to 2019 for MVUSD and 2018 to 2019 for VUSD who have satisfied the A-G course requirement (VUSD only) and the SAT/ACT completion requirement. Control mean reports estimated baseline enrollment rates for the bin (size = 0.02) below the 3.0 GPA cutoff, calculated as $\beta_0 + \beta_2 \cdot 2.95$ derived from Equation ???. P Identical represents p-values for the hypothesis that the coefficients between each pair of demographic groups are identical. For instance, the P Identical value in column two represents the hypothesis that first-generation and non-first-generation students have the same RD estimate. The bandwidth is fixed at 0.7 above and below the 3.0 GPA cutoff. *: p-value < .1; **: p-value < .05; ***: p-value < .01.

	By First-Gen Status			By Race		By Gender		By Low-Income Status	
	Full Sample (<i>N</i> = 2070) (1)	First-Generation (<i>N</i> = 923) (2)	Not First-Generation (<i>N</i> = 1147) (3)	Nonwhite (<i>N</i> = 1293) (4)	White (<i>N</i> = 777) (5)	Female (<i>N</i> = 1064) (6)	Male (<i>N</i> = 1006) (7)	Low-Income (<i>N</i> = 652) (8)	Not Low-Income (<i>N</i> = 1418) (9)
Any Postsecondary									
RD Estimate	-0.00976 (0.029235)	-0.01398 (0.044311)	-0.00551 (0.038928)	0.006473 (0.037158)	-0.05016 (0.047672)	-0.00641 (0.042558)	-0.01817 (0.040377)	-0.00219 (0.056928)	-0.01338 (0.033352)
Control Mean	0.86420598	0.85436788	0.8722092	0.8470322	0.90315026	0.8681168	0.8635699	0.819193	0.88627078
P Identical	0.885649				0.36296	0.84111		0.856102	
Any Four-year									
RD Estimate	0.050487 (0.042189)	0.104119* (0.063092)	0.010671 (0.056742)	0.03083 (0.051724)	0.080179 (0.073673)	0.071598 (0.060732)	0.045813 (0.05881)	-0.00018 (0.072711)	0.075059 (0.051833)
Control Mean	0.43955156	0.393066	0.4753532	0.4402925	0.4418834	0.45084358	0.42235012	0.44020056	0.43945318
P Identical	0.271067				0.583109	0.760398		0.399934	
Any Two-year									
RD Estimate	-0.06024 (0.040698)	-0.1181* (0.061608)	-0.01618 (0.054194)	-0.02436 (0.049711)	-0.13034* (0.071377)	-0.07801 (0.057225)	-0.06398 (0.057933)	-0.00201 (0.068684)	-0.08844* (0.050381)
Control Mean	0.4246584	0.46130188	0.39686	0.4067536	0.46125692	0.4172762	0.44122078	0.3790014	0.4468176
P Identical	0.213412				0.221483	0.863306		0.315625	
CSUSM Only									
RD Estimate	0.034392 (0.031674)	0.051813 (0.049631)	0.017795 (0.040712)	0.054415 (0.040998)	-0.00169 (0.048943)	0.034364 (0.047501)	0.039803 (0.042191)	0.029421 (0.05906)	0.03449 (0.037141)
Control Mean	0.1498192	0.1440723	0.1557652	0.15517632	0.1436696	0.1715542	0.1277598	0.16819932	0.142484
P Identical	0.592667				0.403437	0.931768		0.939545	
Any CSU									
RD Estimate	0.045534 (0.037367)	0.097106* (0.056389)	0.003203 (0.04992)	0.079419* (0.047107)	-0.01469 (0.061303)	0.048535 (0.0559)	0.057776 (0.049738)	0.040176 (0.065994)	0.046012 (0.045292)
Control Mean	0.22989924	0.2070684	0.2481767	0.23309096	0.2272162	0.25787342	0.1973976	0.23743802	0.2277544
P Identical	0.211964				0.235345	0.901696		0.941152	

Table A7. RD Estimates by Type of College and Demographic Including Graduating Class of 2020 (BW: [2.74, 3.44]). This table presents RD estimates of the effect of eligibility for the CSUSM MOUs on college enrollment rates by postsecondary institution type and demographic following Equation ???. The sample is restricted to graduates from 2017 to 2020 for MVUSD and 2018 to 2020 for VUSD who have satisfied the A-G course requirement (VUSD only) and the SAT/ACT completion requirement. Control mean reports estimated baseline enrollment rates for the bin (size = 0.02) below the 3.0 GPA cutoff, calculated as $\beta_0 + \beta_2 \cdot 2.95$ derived from Equation ???. P Identical represents p-values for the hypothesis that the coefficients between each pair of demographic groups are identical. For instance, the P Identical value in column two represents the hypothesis that first-generation and non-first-generation students have the same RD estimate. The bandwidth is calculated following Calonico *et al.* (2014) and fixed from running the regression for the placebo sample and the outcome of enrollment at any postsecondary. ? *: p-value < .1; **: p-value < .05; ***: p-value < .01.

	By First-Gen Status			By Race		By Gender		By Low-Income Status	
	Full Sample (<i>N</i> = 3276) (1)	First-Generation (<i>N</i> = 1464) (2)	Not First-Generation (<i>N</i> = 1812) (3)	Nonwhite (<i>N</i> = 2037) (4)	White (<i>N</i> = 1239) (5)	Female (<i>N</i> = 1691) (6)	Male (<i>N</i> = 1585) (7)	Low-Income (<i>N</i> = 1031) (8)	Not Low-Income (<i>N</i> = 2245) (9)
Any Postsecondary									
RD Estimate	-0.03057 (0.023733)	-0.02142 (0.03567)	-0.03815 (0.031817)	-0.0325 (0.029815)	-0.03106 (0.039543)	-0.05614* (0.033359)	-0.00441 (0.033848)	-0.06264 (0.044581)	-0.01777 (0.027828)
Control Mean	0.86415432	0.85644122	0.87108838	0.86030024	0.87391134	0.8736413	0.85155992	0.8464498	0.87403442
P Identical	0.726152	0.726152	0.726152	0.726152	0.726152	0.726152	0.726152	0.726152	0.726152
Any Four-year									
RD Estimate	0.0144 (0.033774)	0.033226 (0.0505)	-0.00033 (0.045477)	0.00497 (0.041535)	0.031229 (0.058365)	0.034766 (0.048592)	0.004056 (0.046885)	0.013151 (0.058897)	0.015126 (0.04127)
Control Mean	0.421014	0.40664276	0.43270244	0.42562174	0.41406146	0.43919472	0.3988073	0.41742262	0.4222893
P Identical	0.621727	0.621727	0.621727	0.621727	0.621727	0.621727	0.621727	0.621727	0.621727
Any Two-year									
RD Estimate	-0.04497 (0.033054)	-0.05465 (0.049805)	-0.03783 (0.044231)	-0.03747 (0.040724)	-0.06228 (0.056934)	-0.0909* (0.046571)	-0.00847 (0.046901)	-0.07579 (0.057364)	-0.0329 (0.04044)
Control Mean	0.4431284	0.4498124	0.438379	0.4346586	0.4598658	0.4344396	0.4527586	0.4290292	0.4517312
P Identical	0.800496	0.800496	0.800496	0.800496	0.800496	0.800496	0.800496	0.800496	0.800496
CSUSM Only									
RD Estimate	0.034214 (0.024891)	0.071925* (0.039232)	0.000272 (0.031768)	0.067366** (0.032328)	-0.01737 (0.038291)	0.023906 (0.037741)	0.04832 (0.032475)	0.060687 (0.047135)	0.02256 (0.028948)
Control Mean	0.12764236	0.12154026	0.1352054	0.13111734	0.12119854	0.15513234	0.1008692	0.14433364	0.1200814
P Identical	0.151393	0.151393	0.151393	0.151393	0.151393	0.151393	0.151393	0.151393	0.151393
Any CSU									
RD Estimate	0.047834 (0.029709)	0.078444* (0.044962)	0.021113 (0.03954)	0.074164** (0.037747)	0.011646 (0.047729)	0.048552 (0.044938)	0.057088 (0.038686)	0.071213 (0.053182)	0.037593 (0.035785)
Control Mean	0.20157692	0.19195694	0.21107774	0.21338934	0.1799678	0.23737116	0.16290138	0.21360044	0.1959425
P Identical	0.337389	0.337389	0.337389	0.337389	0.337389	0.337389	0.337389	0.337389	0.337389

Table A8. RD Estimates by Type of College and Demographic Including Graduating Class of 2020 (BW: [2.4, 3.6]). This table presents RD estimates of the effect of eligibility for the CSUSM MOUs on college enrollment rates by postsecondary institution type and demographic following Equation ???. The sample is restricted to graduates from 2017 to 2020 for MVUSD and 2018 to 2020 for VUSD who have satisfied the A-G course requirement (VUSD only) and the SAT/ACT completion requirement. Control mean reports estimated baseline enrollment rates for the bin (size = 0.02) below the 3.0 GPA cutoff, calculated as $\beta_0 + \beta_2 \cdot 2.95$ derived from Equation ???. P Identical represents p-values for the hypothesis that the coefficients between each pair of demographic groups are identical. For instance, the P Identical value in column two represents the hypothesis that first-generation and non-first-generation students have the same RD estimate. The bandwidth is fixed at 0.6 above and below the 3.0 GPA cutoff. *: p-value < .1; **: p-value < .05; ***: p-value < .01.

	By First-Gen Status			By Race			By Gender		By Low-Income Status	
	Full Sample (<i>N</i> = 3704) (1)	First-Generation (<i>N</i> = 1621) (2)	Not First-Generation (<i>N</i> = 2083) (3)	Nonwhite (<i>N</i> = 2271) (4)	White (<i>N</i> = 1433) (5)	Female (<i>N</i> = 1927) (6)	Male (<i>N</i> = 1777) (7)	Low-Income (<i>N</i> = 1146) (8)	Not Low-Income (<i>N</i> = 2558) (9)	
Any Postsecondary										
RD Estimate	-0.01921 (0.022141)	-0.00238 (0.033729)	-0.03297 (0.029388)	-0.01886 (0.028167)	-0.02536 (0.036168)	-0.02797 (0.031178)	-0.00992 (0.031532)	-0.02502 (0.042203)	-0.01892 (0.025799)	
Control Mean	0.85787028	0.84509204	0.86875058	0.85121226	0.87322238	0.8617778	0.85269006	0.83050046	0.87182454	
P Identical	0.493033			0.88919	0.683807			0.897202		
Any Four-year										
RD Estimate	0.036673 (0.031541)	0.062854 (0.047461)	0.016958 (0.042277)	0.023576 (0.038983)	0.053979 (0.05407)	0.069618 (0.045288)	0.009619 (0.04386)	0.043218 (0.055479)	0.034162 (0.038385)	
Control Mean	0.4113433	0.39120104	0.42709988	0.41390006	0.41176096	0.42463476	0.39773766	0.40195338	0.41525406	
P Identical	0.470434			0.647202	0.34134			0.892874		
Any Two-year										
RD Estimate	-0.05588* (0.030717)	-0.06523 (0.046624)	-0.04993 (0.040897)	-0.04243 (0.038029)	-0.07933 (0.0525)	-0.09759** (0.043139)	-0.01953 (0.043721)	-0.06823 (0.053669)	-0.05309 (0.037493)	
Control Mean	0.446526	0.453892	0.4416328	0.4373082	0.4614688	0.43715	0.4549494	0.42856	0.4565794	
P Identical	0.804877			0.568389	0.203739			0.817089		
CSUSM Only										
RD Estimate	0.057495** (0.022781)	0.096627*** (0.036316)	0.019407 (0.028849)	0.08801*** (0.029916)	0.011023 (0.034515)	0.045115 (0.034622)	0.072304** (0.029494)	0.09387** (0.043662)	0.040796 (0.02638)	
Control Mean	0.112051	0.1043216	0.1227374	0.1164954	0.1041504	0.1423152	0.0830696	0.1238446	0.1070718	
P Identical	0.091574			0.1073	0.550403			0.273026		
Any CSU										
RD Estimate	0.065607** (0.027666)	0.089277** (0.042227)	0.041624 (0.036587)	0.093239*** (0.035389)	0.024478 (0.044135)	0.069097* (0.041724)	0.068621* (0.036044)	0.098665** (0.049963)	0.05114 (0.033213)	
Control Mean	0.18929966	0.18409412	0.19699246	0.1991792	0.17316036	0.2238793	0.153579	0.1992283	0.18461104	
P Identical	0.392346			0.235804	0.993109			0.420095		

Table A9. RD Estimates by Type of College and Demographic Including Graduating Class of 2020 (BW: [2.3, 3.7]). This table presents RD estimates of the effect of eligibility for the CSUSM MOUs on college enrollment rates by postsecondary institution type and demographic following Equation ???. The sample is restricted to graduates from 2017 to 2020 for MVUSD and 2018 to 2020 for VUSD who have satisfied the A-G course requirement (VUSD only) and the SAT/ACT completion requirement. Control mean reports estimated baseline enrollment rates for the bin (size = 0.02) below the 3.0 GPA cutoff, calculated as $\beta_0 + \beta_2 \cdot 2.95$ derived from Equation ???. P Identical represents p-values for the hypothesis that the coefficients between each pair of demographic groups are identical. For instance, the P Identical value in column two represents the hypothesis that first-generation and non-first-generation students have the same RD estimate. The bandwidth is fixed at 0.7 above and below the 3.0 GPA cutoff. *: p-value < .1; **: p-value < .05; ***: p-value < .01.